



LANSON PLACE

CAUSEWAY BAY  
HONG KONG

## Welcome home to Lanson Place Causeway Bay

Find your personal retreat with French-inspired interiors,  
seamless services and calming comfort





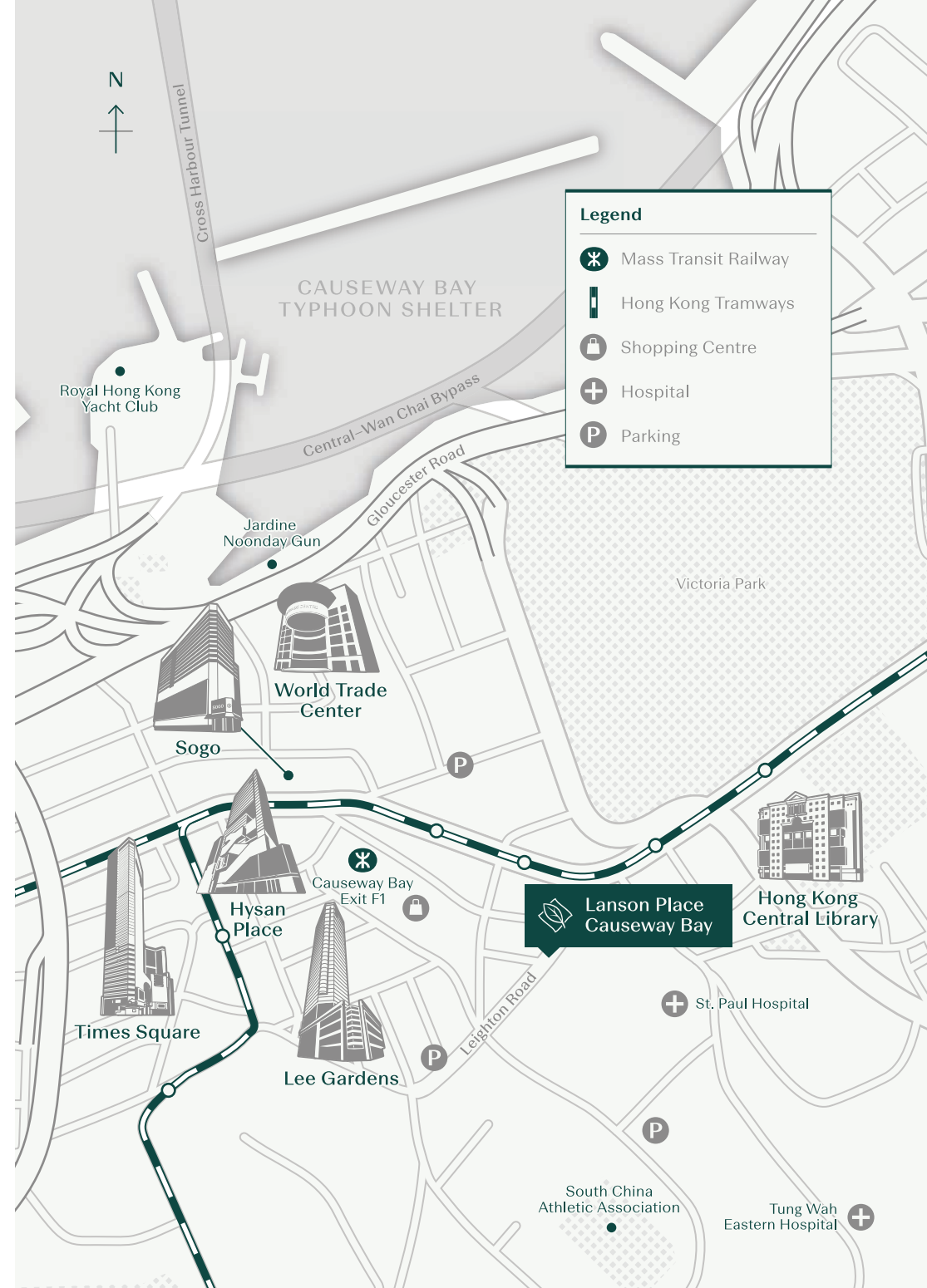
## Your Neighbourhood

# Causeway Bay

The beating heart that pumps blood through Hong Kong's retail arteries, Causeway Bay has it all: big-name designer brands in gleaming glass towers, Michelin-starred gourmet, VR gaming venues and indoors golf, and to top it off, Hong Kong Island's largest public park. It's an alluring enclave that's constantly in flux with everything, yet still intimately connected to the city's fishing-village past.



The Skyline of Causeway Bay





## Neighbourhood Highlights

# Excitement

Whatever is “in” – no matter the latest bubble tea flavours or ultra-rare vintage sneakers – Causeway Bay will invariably have it on offer.

# Shopping

Entire shopping complexes filled with indie brands, boulevards lined with flagship stores, or authentic street markets for deal-hunters – there’s variety enough for the most voracious of shoppers.

# Sports

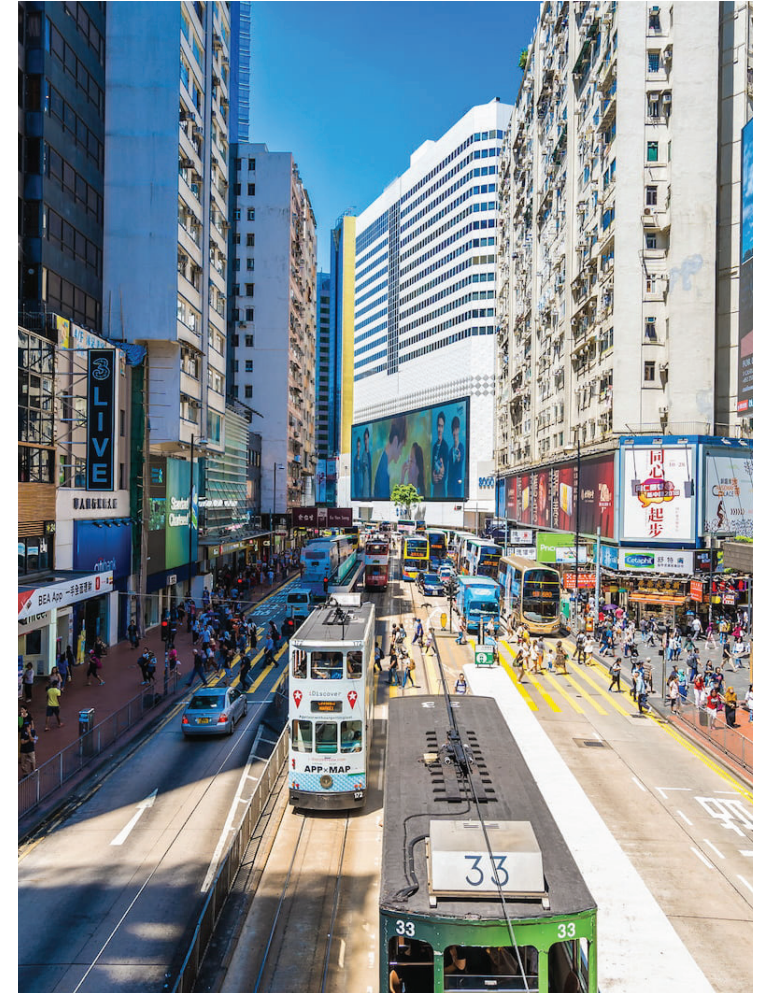
For the physically active, there’re ample opportunities in Victoria Park to jog. Engage in a game of street basketball, or practice morning Tai Chi. Meanwhile, Hong Kong Stadium is just minutes away by foot, where sports lovers can catch a game of world-class rugby or soccer.

# Work

With CBDs of Central and Quarry Bay, as well as the conferencing hub of Wan Chai reachable with just 10 minutes via the MTR or highways, switching gears from leisure to business is as easy as walking down the street.



Scan for further recommendations  
or visit [lansonplace.com/causewaybay](https://lansonplace.com/causewaybay)



Step out to the vogue, the chic,  
and the buzz of Causeway Bay,  
Hong Kong’s beating heart of lifestyle



## Your Personal Hotel

---

Retreat into a haven of calm where contemporary French-imbued designs soothe and invigorate your senses. Our rooms, some of the rarest in the city to boast spacious designs with separate living and sleeping areas, come even with full kitchenette for making light meals, as well as large windows letting in abundant natural lighting. For business travellers, a writing desk affords precious workspace while APPELLES-branded bath amenities craft an indulgent experience for the perfect wind-down before bed.





Your Personal Hotel

## Superior Room

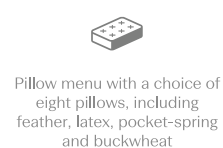
Modern European style in a soothing colour scheme creates a sense of calm and tranquillity that is hard to find in Hong Kong. High ceilings and custom storage provide you with plenty of space to move around, relax and rest, while compact kitchenette provides the convenience of a home.



Floorplan



Gross area 380ft<sup>2</sup> (35m<sup>2</sup>)



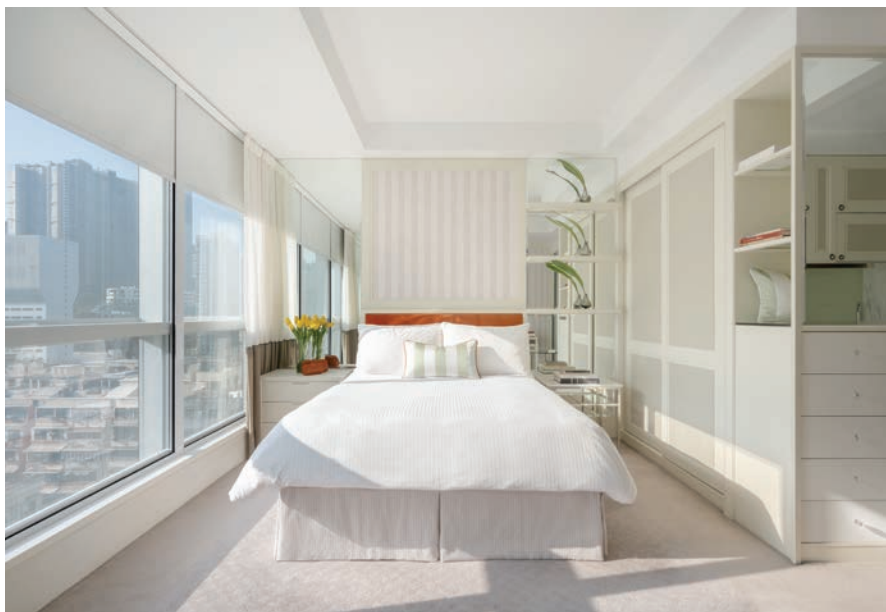
**In-room amenities** DVD player, satellite television, interactive television, docking station compatible with a range of smart devices, in-room safe, rain shower, hair dryer, iron & ironing board, refrigerator, Wi-Fi internet access



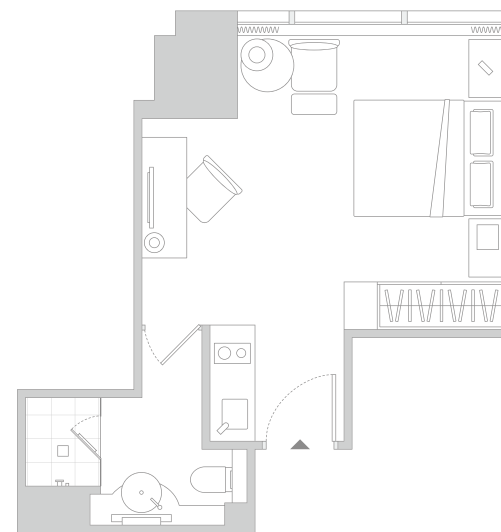
Your Personal Hotel

## Premier Room

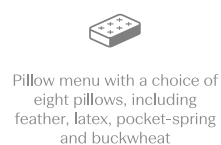
The Premier Room features a clean, comfortable, contemporary style. High ceilings and a cool colour palette maximise the amount of natural light that streams in, and pops of jewel tones on plush furnishings provide added comfort.



Floorplan



Gross area 400ft<sup>2</sup> (37m<sup>2</sup>)



**In-room amenities** DVD player, satellite television, interactive television, docking station compatible with a range of smart devices, in-room safe, rain shower, hair dryer, iron & ironing board, refrigerator, Wi-Fi internet access



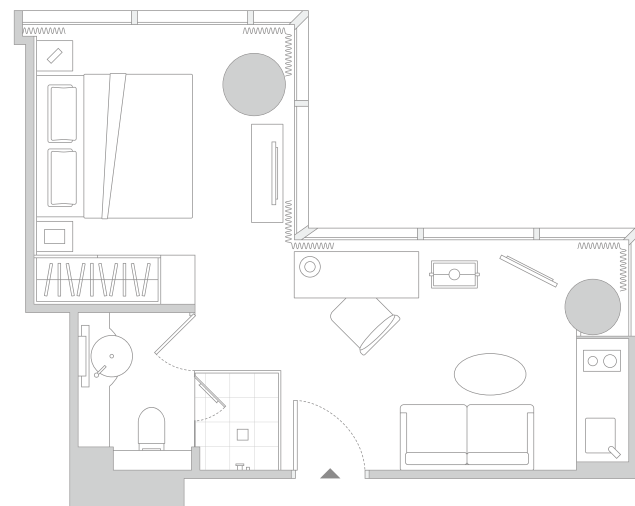
Your Personal Hotel

## Deluxe Room

The calming Deluxe Room is imbued with a touch of European elegance. With chic grey and white striped wallpaper, white bed linens, and the occasional pop of jewel colour on velvet headboards, cushions and chairs guests can feel content and at ease.



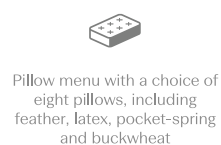
Floorplan



Gross area 440–500ft<sup>2</sup> (40–46m<sup>2</sup>)

**In-room amenities** DVD player, satellite television, interactive television, docking station compatible with a range of smart devices, in-room safe, rain shower, hair dryer, iron & ironing board, refrigerator, Wi-Fi internet access

Disclaimer: Configurations may vary within each room category and subject to availability







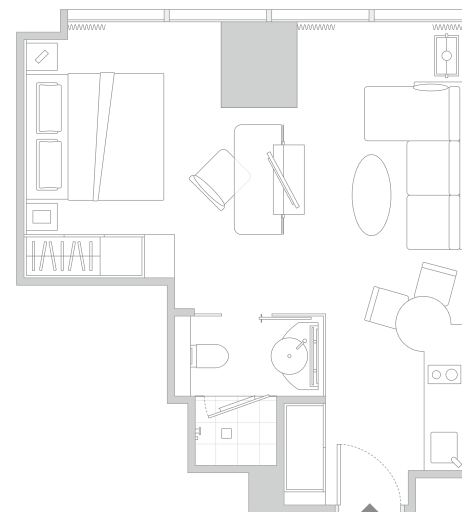
Your Personal Hotel

## Grand Luxe Room

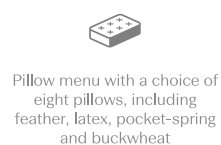
Featuring modern styling and thoughtful design that maximise space and light, as well as an elegant palette and tasteful furnishings, the Grand Luxe Room offers the perfect luxurious city hideaway.



Floorplan



Gross area 480-550 ft<sup>2</sup> (45-51 m<sup>2</sup>)



**In-room amenities** DVD player, satellite television, interactive television, docking station compatible with a range of smart devices, in-room safe, rain shower, hair dryer, iron & ironing board, refrigerator, Wi-Fi internet access, coffee maker

Disclaimer: Configurations may vary within each room category and subject to availability



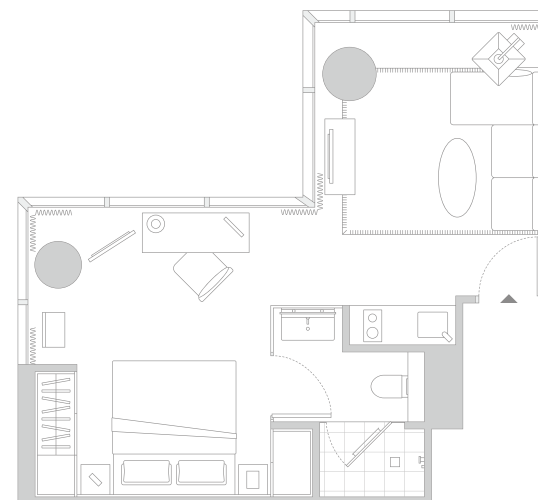
Your Personal Hotel

## Prestige Suite

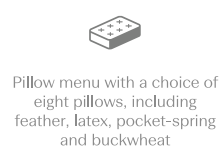
The Prestige Suite is designed to evoke a sense of calm, with high quality fabrics and luxurious materials rendered in muted tones and the occasional pop of jewel colour. Thoughtful space design creates clearly delineated sleeping and living room areas, and a concealed yet well-equipped kitchenette.



Floorplan



Gross area 520–600 ft<sup>2</sup> (48–56 m<sup>2</sup>)



**In-room amenities** DVD player, satellite television, interactive television, docking station compatible with a range of smart devices, in-room safe, rain shower, hair dryer, iron & ironing board, refrigerator, Wi-Fi internet access, coffee maker

Disclaimer: Configurations may vary within each room category and subject to availability





Your Personal Hotel

## Penthouse One-Bedroom Suite

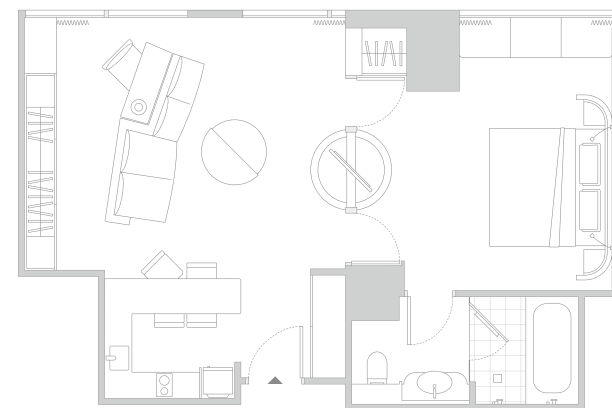
The beautifully appointed Penthouse One-Bedroom Suite is framed against a stunning backdrop of Hong Kong's gorgeous skyline through impressive floor-to-ceiling windows.

Plush furnishings sit with modern art pieces and intelligent design features, while a full open kitchen looks out upon the dining and living room areas.

Far from the hustle and bustle below, these hushed interiors are all about elegance and comfort.



Floorplan



Gross area 1,000ft<sup>2</sup> (92m<sup>2</sup>)



APPELLES  
bathroom toiletries



Open kitchen



Comprehensive cooking  
utensils



Welcome hamper



Pillow menu with a choice of  
eight pillows, including  
feather, latex, pocket-spring  
and buckwheat

**In-room amenities** DVD player, satellite television, interactive television, docking station compatible with a range of smart devices, in-room safe, rain shower, hair dryer, iron & ironing board, refrigerator, Wi-Fi internet access

**Kitchen Amenities** Oven, coffee maker, comprehensive kitchen amenities, spacious full-size refrigerator and small freezer, under and overhead cupboard space



Your Personal Hotel

## Penthouse Two-Bedroom Suite

Featuring separated kitchen, living and dining areas, and two well-appointed bedroom suites (each with a king-size bed), plus a full marble bathroom with bathtub and rain shower.

Large wardrobes and optimised storage to keep your personal items and luggage.



Floorplan



Gross area 1,500–2,000ft<sup>2</sup> (140–186m<sup>2</sup>)



APPELLES  
bathroom toiletries



Open kitchen



Comprehensive cooking  
utensils



Welcome hamper



Pillow menu with a choice of  
eight pillows, including  
feather, latex, pocket-spring  
and buckwheat

**In-room amenities** DVD player, satellite television, interactive television, docking station compatible with a range of smart devices, in-room safe, rain shower, hair dryer, iron & ironing board, refrigerator, Wi-Fi internet access

**Kitchen Amenities** Oven, coffee maker, comprehensive kitchen amenities, spacious full-size refrigerator and small freezer, under and overhead cupboard space

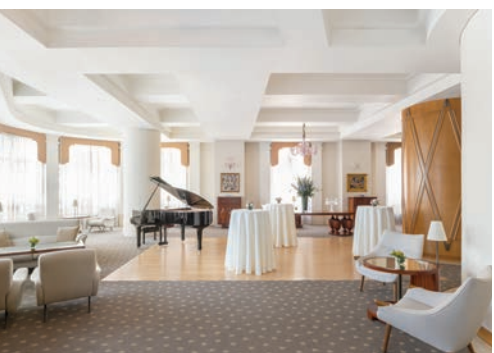
Disclaimer: Configurations may vary within each room category and subject to availability





## Meetings & Events

Holding a meeting or event at Lanson Place guarantees attentive and professional service with an air of exclusivity. Intimate gatherings can be arranged in our chic Murano Room, while meetings, seminars and presentations can be arranged in our larger meeting rooms. For a special event or launch party, try The Leighton – a spacious European-styled indoor courtyard.







### **Around-the-clock Services**

Personalised guest services, including housekeeping, 24-hour reception and security, and babysitting, ensure that your stay is comfortable and stress-free.

### **133 Lounge & Library**

Relax and enjoy a drink or light snacks in the plush surroundings bathed in a soothing, contemporary European-inspired palette.

### **Gym**

Fully equipped with state-of-the-art equipment and breathtaking views of the Victoria Park, the city's largest public park.

### **Business Centre**

Enjoy the convenience of access to a printer, a scanner, a photocopier and more, plus broadband internet access, in our well-equipped work hub.

## Facilities & Services



Embark on a journey of design at Lanson Place Causeway Bay, be greeted by the European-inspired architectural façade and the antique grand chandelier – acquired from an authentic French castle – at the Concierge. Take in the rich palettes and meticulous details of our interior décor from the sophistication of Murano Room, continental airiness of The Leighton, to the art deco modernism of 133 Lounge and Library.





## Transportation Network

# Getting Around

Lanson Place Causeway Bay offers easy access to key CBDs in island side, including Quarry Bay, Wan Chai, Admiralty and Central, all reachable with just 10 minutes via MTR or highways.

**Wan Chai**  
5 mins by MTR

**Quarry Bay**  
10 mins by MTR

**Admiralty**  
10 mins by MTR

**Central**  
15 mins by MTR



## Useful Information

### Transportation

MTR  
[mtr.com.hk](http://mtr.com.hk)

KMB  
[kmb.hk](http://kmb.hk)

Citibus  
[nwstbus.com.hk](http://nwstbus.com.hk)

Tram  
[hktramways.com](http://hktramways.com)

### Tourist Information

Hong Kong Tourism Board  
[discoverhongkong.com](http://discoverhongkong.com)

Hong Kong Observatory  
[hko.gov.hk](http://hko.gov.hk)

Lanson Place Causeway Bay  
133 Leighton Road, Causeway Bay, Hong Kong

+852 3477 6888  
[enquiry.lphk@lansonplace.com](mailto:enquiry.lphk@lansonplace.com)



Scan to visit Hotel's official website

